



P.O. Box 125, Lake Lure, NC 28746

[lakelurefloweringbridge.org](http://lakelurefloweringbridge.org)

Eleanor Bails, editor, [llfb.newsletter@gmail.com](mailto:llfb.newsletter@gmail.com)

Alice Garrard, associate editor/photographer

# Stare at This Bear!



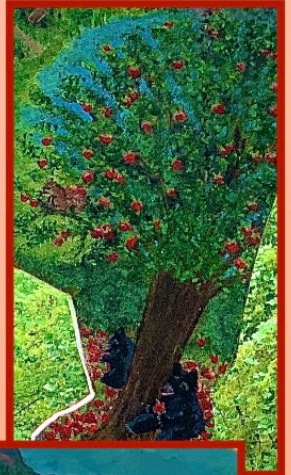
Guests strolling the bridge can't help but pause and gaze a bit longer than usual at one of the thirty-five artfully decorated bear silhouettes that make up the latest special feature on the Flowering Bridge.

In a style similar to American folk art, artist Laura Krejci captures the flavor of the area with a design depicting more than fifteen iconic local spots. Chimney Rock, Lake Lure Beach, the Little Chapel, the Rocky Broad River, several parks and nature trails, and, of course, the Flowering Bridge are among the landmarks painted on Laura's bear. Scattered throughout the landscape are wildlife that reside alongside human inhabitants of the Hickory Nut Gorge: bear, deer, chipmunks, squirrels, groundhogs and birds.

Laura, a member of the Lake Lure Artists and Communications Specialist for the Town of Lake Lure, moved to Lake Lure from Columbia, SC, three years ago. The inspiration for her design came from the recollection of her mother's and grandmother's basket purses that were painted with iconic locations around New Orleans as well as a canvas bag that she owns with images of Chimney Rock Village and Lake Lure.

"Joy, the bear who celebrates the amazing beauty that surrounds Lake Lure," is currently on display in the arbor near the west entrance to the bridge. This creative painting will be part of the online art auction October 15-24.

These close-up photos of the design that Laura painted on her bear reveal many references to landmarks and places of interest in the Lake Lure area.



## News OctoBEAR 2021

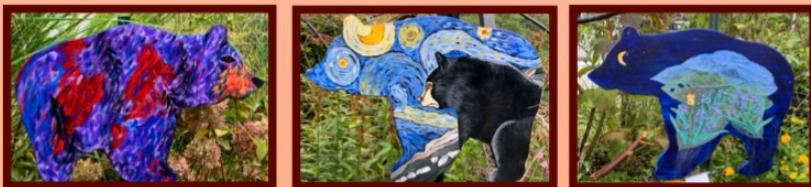
### Calendar of Events

Through October 24 – Special Feature: Loaded For Bear

October 15 - October 24 – Online Artwork Auction of bears on display on bridge to benefit the LLFB  
See related article at the top of page 2.

Tuesday, October 26, 10 a.m. – Seed Harvesting, Saving, Sharing and Seed Swap  
Class led by a panel of Flowering Bridge Volunteers  
Flowering Bridge Welcome Terrace (west end)

FOR INFORMATION ABOUT CLASSES OR TOURS,  
call Alice or Danny at 828-625-2540  
or email [alicegrrrd@gmail.com](mailto:alicegrrrd@gmail.com)



### Captivated by Van Gogh

If the popular immersive exhibit featuring the artwork of Dutch painter Vincent Van Gogh has captured your attention, don't miss the Van Gogh-style bears, pictured above, currently on display on the bridge. These masterpieces are the creations of, left to right, LLFB volunteer Pamela Paulus and Lake Lure artists Amy Wald and Lori Loftus.

FOLLOW US ON:  

## Don't Miss the Opportunity...

... to own a piece of original artwork created by Lake Lure Artists and friends to display in your own home or landscape. All of the 18-inch-tall by 24-inch-wide, weatherized wooden bear silhouettes, currently on display on the bridge, will be sold at an online auction, held October 15-24. Proceeds from the auction will benefit the Lake Lure Flowering Bridge. Information about the auction, which goes live on October 15, may be found on the Lake Lure Flowering Bridge website.



## COMPOSTING 101

Adding compost to soil provides essential nutrients, air and moisture, and improves the texture of clay and sandy soils, which results in healthier plants. In addition, composting itself is an environmentally responsible practice because it not only reduces or eliminates the need for synthetic chemicals and fertilizers, but also cuts down on the amount of organic waste that accumulates in landfills.

LLFB garden co-chair Debbie Clark taught the basics of composting last month in a bridge-sponsored class presented at our new composting center. The process of making compost involves providing both a balanced diet and an optimal environment for microorganisms to break down organic matter.

Debbie explained that both air and water are essential, and the ideal diet must include brown and green "food." The optimal ratio of food is four parts "browns," such as dry, brown leaves, cornstalks and straw, to one part "greens," which can include such things as grass clippings, green leaves, weeds and kitchen scraps.

These organic materials should be layered, along with water and a commercially made compost activator or a shovel full of good garden soil in a homemade or purchased compost bin, a composting tumbler or compost area in your yard. Make sure to turn the compost regularly with a pitchfork or shovel — or tumble it if you own a compost tumbler — until a temperature of 160 °F is established.

"Once your compost pile starts 'cooking,' don't add anything else to it," warns Debbie, "or you will be starting the whole process over again."



The LLFB's compost center, which includes an area for mulch storage, is located near the west entrance to the bridge.

[photo by Dan Bails]

## Friends Gather for a Tour



A group of University of South Florida Psi Delta Epsilon fraternity brothers have kept the camaraderie going by meeting every few years for over forty years. This year, they and their spouses chose to gather in the Lake Lure area and their itinerary included a guided tour of the LLFB.

Fall is a great time for tours. For information about, or to schedule a group tour, contact Alice or Danny at 828-625-254 or [alicegrrrd@gmail.com](mailto:alicegrrrd@gmail.com).



As part of her presentation, Debbie Clark explained how bridge volunteers are using the compost center.

[photo by Lynn Lang]

# OctoBEAR Scrapbook

Local artists have donated their time and talent to create thirty-five uniquely decorated bears, on display on the bridge until October 24. If you can't make an in-person visit, enjoy more photos of these artful creatures on our Facebook Page and Instagram.

